



# Grid Applications and Human Network in SARS Combat

2003 / 12 / 9

Fang-Pang Lin



“Bandwidth” and “degree of connectivity”  
are the new measures of power ...

- Three distinguishing factors to harness power
  - Culture to exploit & share knowledge
  - Competitive setting that embraces change
  - Ability to partner

Thomas Friedman, New York Times, P.11 11/Apr/1998

--courtesy of Chris Buja

# Taiwan Advanced Research and Education Network



## Network Steering and Deployment committees

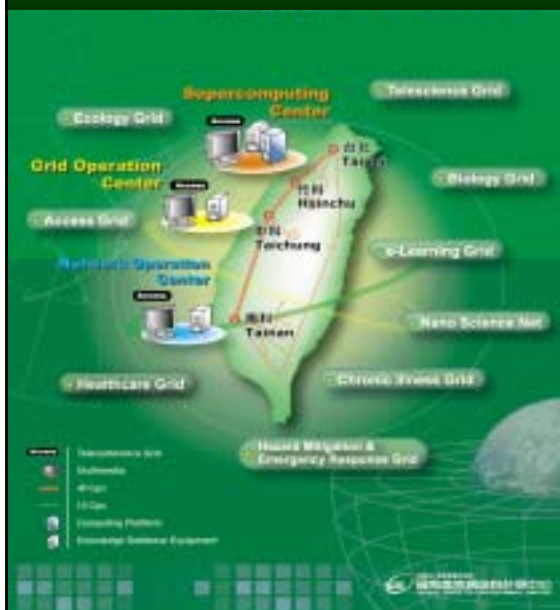
Backbone **40Gbps**  
 Regional Network **10Gbps**  
 Campus Network **1Gbps**

## Technologies & Applications

- Multimedia
- e-learning
- Multicast
- MPLS/VPN
- IPv6
- Measurement

## International Innovation and Collaborations

# Knowledge Innovation National Grid



## KING Steering and Deployment committees

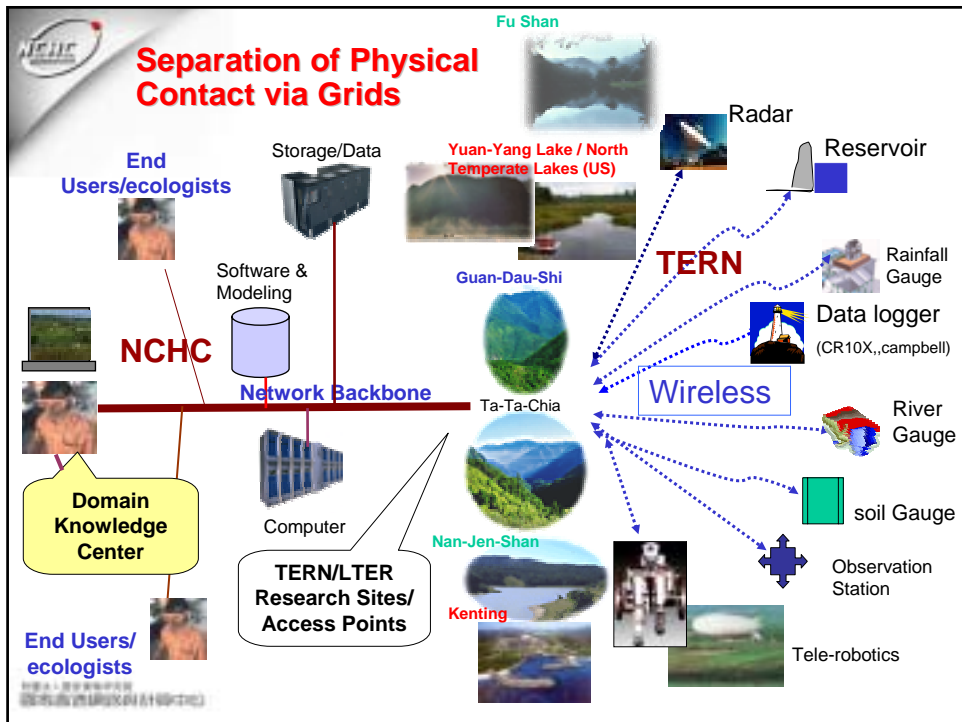
- Supercomputing Center
- Grid Operation Center
- Network Operation Center (NOC)

## Grid applications

- ECO Grid
- Asthma Grid
- SARS Grid
- Access Grid
- Biology Grid
- Hazard Mitigation & Emergency Response Grid
- e-learning Grid

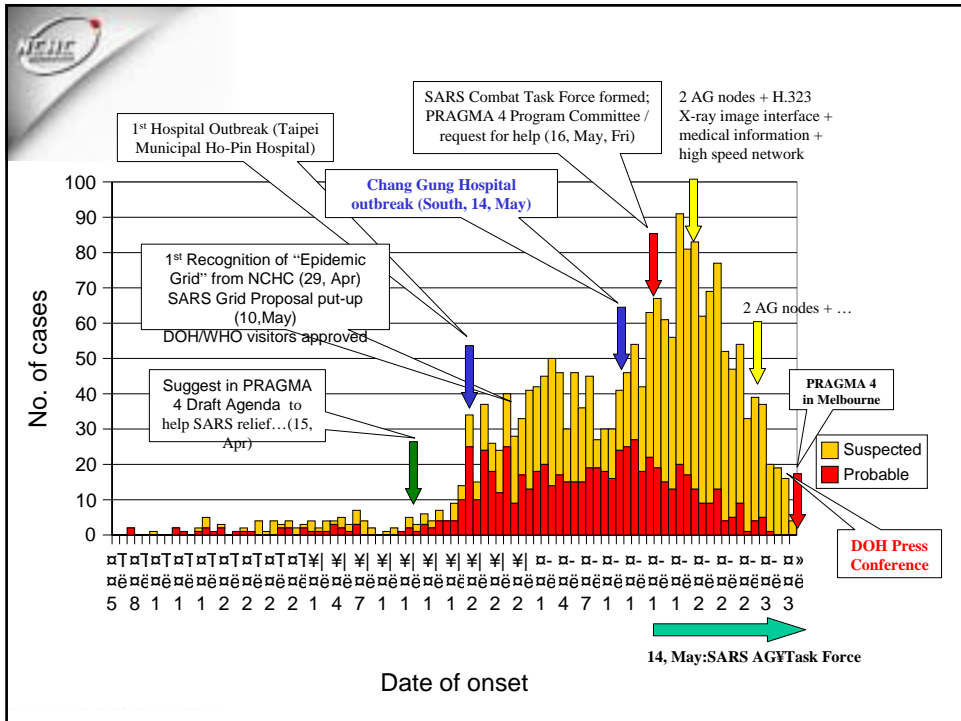
## International Innovation and Collaboration





## The Disease

- The period of incubation for the coronavirus of SARS is 3-7 days. 10 days quarantine is the key to contain the virus.
- Transmission through physical contact or breathing in flying particles of the saliva or phlegm of a sick person.
- Once infected there are symptoms of fever for a few days, then follow with an acute pneumonia.



## The situation

- A SARS patient were sent to Ho-Pin Hospital without notifying medical staff.
- Cross infection spread in the hospital. Similar pattern of infection repeated in major hospitals of Taipei and Kaoshung, including medical centers.
- 95% infection is of medical staff and their relatives and friends. The quarantine, exhaustion and fear results in depletion of medical staff.

國立臺灣大學醫學院附設醫院  
國立中央研究院

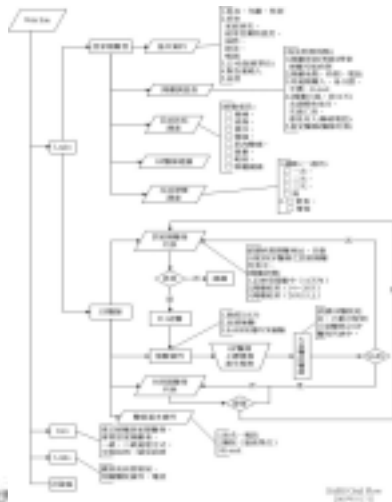


# The Temporal Urgency

- Most medical doctors and nurses worked day and night and some with a little protection. Remote and collaborative diagnosis becomes a real issue.
- Due to the gradual depletion of medical staff, we decide to help and racing with time to realize it.



# Some important Historical Docs



Quick Note: (4/29)

防疫格網 (Epidemic Grid 暫訂)

- \* 1-2 white-page proposal
- \* Unique IP Address (如 IPv6 的位址) 以便於追蹤與識別
- \* 感應器Sensors 與手機結合手機 考慮的量測數值 -- 體溫 (e.g. 紅外線) -- 脈搏 -- 位置座標 (GPS)
- \* 居家看護或隔離之電話回報 (Call center) 與網路連結 (以WWW網頁輸入)
- \* 以中心為 testbed, single portal (1 週內) 與上班系統整合 (以中心MIS team 為主)
- \* Access Grid PC 版個人型視訊整合 (以中心為例) \* 期於一週內有初步系統整合成果 (4/30-5/7)

Asthma Grid => SARS Grid (7, May)

[SARS AG Task Force](#) (14, May)

[PRAGMA Urgent Call for Help](#) (16, May)



# SARS Combat Begins

People had been working around the clock to assemble and test a **Grid system**, consisting systems of **Access Grid**, **H.323 VTC**, **medical information management**, **emergency dispatch** and **network monitoring**.

情報通信技術研究所  
国立情報学研究所 (NICT)





**DAY 2,3 (18-19, May)**  
[SARS Grid Int'l Support](#)



**DAY 4,5 (20-21, May)**





**DAY 4,5 (20-21, May)**  
**2 AG nodes deployed**



**DAY 6 (22, May)**  
**Remote Diagnosis Test**



**DAY 13 (29, May)**  
**Mega test for AG**



**DAY 15 (1, Jun)**  
**CDC Press Conference**  
**w/ 1 AG node deployed**



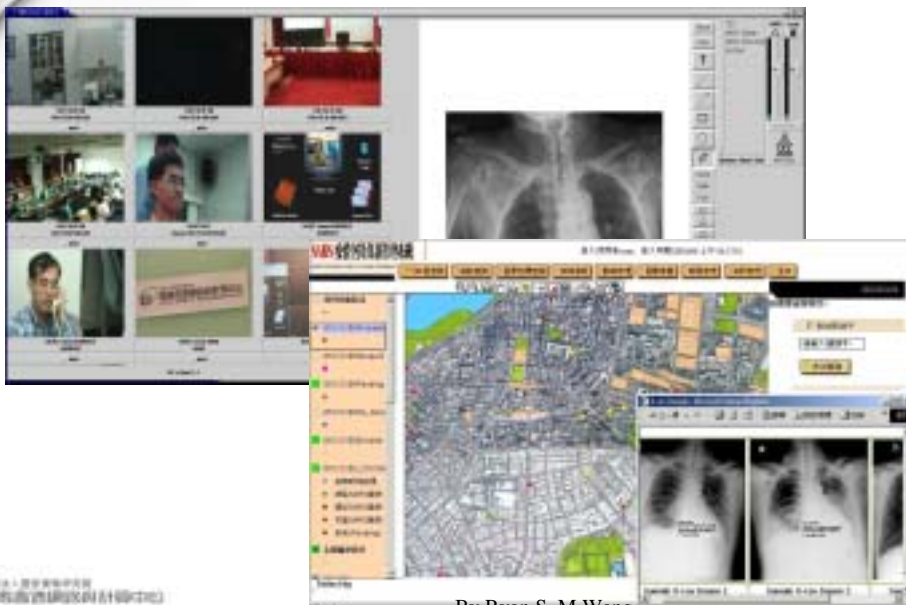
# The work

- Find immediate solution from the current Grid works:  
Asthma Grid, Access Grid and Ecogrid.
  - Specific medical information network
  - Construct AG nodes for hospitals.
  - Integrate GIS system.
  - Monitor the quarantined rooms.
- 3 Hospitals and CDC have AG nodes setup and in operation. Dedicated network is deployed.
- SARS Grid portal [www.sarshope.org](http://www.sarshope.org) developed
- SARS spread GIS portal developed
- International Supports:  
[http://www.npaci.edu/Press/03/052903\\_SARS.html](http://www.npaci.edu/Press/03/052903_SARS.html)  
<http://ncmir.ucsd.edu/news/>

行政院衛生署疾病管制局  
Department of Disease Control, Ministry of Health



# SARS Grid



By Ryan S. M Wang



**Revisit the Quotation**  
 “Bandwidth” and “degree of connectivity” are  
 the new measures of power ...

- Three distinguishing factors to harness power
  - Culture to exploit & share knowledge
  - Competitive setting that embraces change
  - Ability to partner

**Human Network and the knowledge leading to Social Impact are what Grid computing should ultimately bring on.**